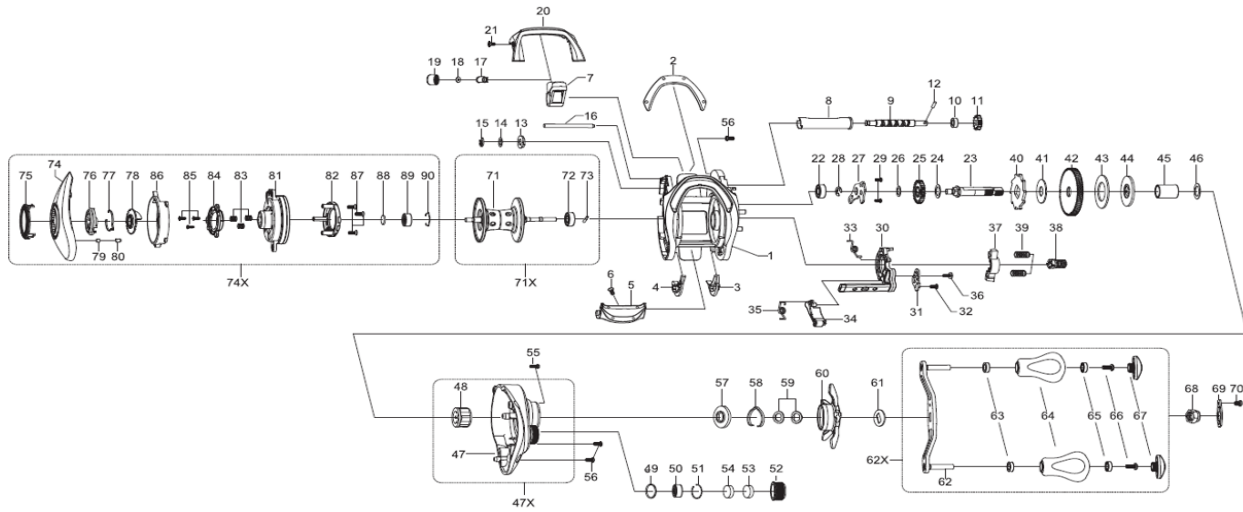


# BAITCASTING REEL

## CC80H/CC80HS

Please order by parts number, not key number  
Veuillez indiquer le numéro de la pièce (Non "Key" No.)



| Key No | Part No  | Description          |
|--------|----------|----------------------|
| 1      | 420-0030 | FRAME                |
| 2      | 420-1020 | FRAME PLATE          |
| 3      | 420-2010 | SPACER (A)           |
| 4      | 420-3010 | SPACER (B)           |
| 5      | 420-4010 | CLUTCH LEVER         |
| 6      | 150-7030 | SCREW(A)             |
| 7      | 352-2010 | T LEVEL WIND         |
| 8      | 140-6010 | T LEVEL WIND GUARD   |
| 9      | 001-7013 | WORM SHAFT(A)        |
| 10     | 260-5010 | BALL BEARING(SPACER) |
| 11     | 001-9010 | WORM SHAFT(B)        |
| 12     | 002-0010 | PIN(A)               |
| 13     | 243-8010 | SPACER(C)            |
| 14     | 053-9020 | WORM SHAFT WASHER    |
| 15     | 004-7010 | WORM SHAFT RETAINER  |
| 16     | 271-1010 | STABILIZER BAR       |
| 17     | 046-4011 | LINE GUIDE PAWL      |
| 18     | 002-5020 | LINE GUIDE WASHER    |
| 19     | 028-8021 | PAWL CAP             |
| 20     | 420-5030 | FRONT PLATE          |
| 21     | 014-1020 | SCREW(B)             |
| 22     | 295-2010 | BALL BEARING(A)      |
| 23     | 055-8032 | DRIVE SHAFT          |
| 24     | 054-8010 | WASHER(A)            |
| 25     | 193-8020 | WORM GEAR            |
| 26     | 004-5020 | WASHER(B)            |
| 27     | 358-6010 | PLATE                |
| 28     | 004-7010 | RETAINER(A)          |
| 29     | 013-5010 | SCREW(D)             |
| 30     | 358-2010 | CLUTCH CAM PLATE(A)  |
| 31     | 289-4010 | CLUTCH CAM PLATE(B)  |
| 32     | 301-4010 | SCREW(E)             |
| 33     | 268-8010 | CLUTCH CAM SPRING    |
| 34     | 230-7011 | CLUTCH TRIP LEVER    |
| 35     | 413-7010 | CLUTCH CAM SPRING    |
| 36     | 029-3010 | SCREW(F)             |
| 37     | 207-3010 | YOKE                 |
| 38     | 361-5010 | PINION GEAR          |
| 39     | 246-5010 | YOKE SPRINGS         |
| 40     | 081-8010 | CLUTCH WHEEL         |
| 41     | 377-2010 | DRIVE GEAR WASHER    |
| 42     | 286-7010 | DRIVE GEAR           |
| 43     | 153-1010 | DRAG WASHER          |
| 44     | 136-7010 | KEY WASHER           |
| 45     | 041-8011 | GEAR SHAFT COLLAR    |
| 46     | 008-6030 | WASHER(C)            |
| 47     | 420-7030 | RIGHT SIDE PLATE(A)  |
| 48     | 209-0010 | ROLLER CLUTCH        |

| Key No | Part No  | Description              |
|--------|----------|--------------------------|
| 49     | 007-1020 | O-RING                   |
| 50     | 297-1010 | BALL BEARING(B)          |
| 51     | 158-8011 | RETAINER(B)              |
| 52     | 429-8030 | CAST CONTROL CAP         |
| 53     | 083-4010 | SPACER(D)                |
| 54     | 069-0010 | SPACER(E)                |
| 55     | 020-2030 | SCREW(G)                 |
| 56     | 020-2020 | SCREW(H)                 |
| 57     | 018-8040 | CLICK LEAF SPRING HOLDER |
| 58     | 200-2010 | CLICK LEAF SPRING        |
| 59     | 008-8010 | DRAG SPRING WASHER       |
| 60     | 420-9020 | STAR DRAG                |
| 61     | 093-3010 | HANDLE COLLAR            |
| 62     | 421-1010 | HANDLE ASSEMBLY(A)       |
| 63     | 019-6010 | BUSHING (A)              |
| 64     | 421-3010 | HANDLE KNOB              |
| 65     | 019-6010 | BUSHING (B)              |
| 66     | 018-0020 | HANDLE SCREW             |
| 67     | 421-4010 | CAP                      |
| 68     | 429-6011 | HANDLE NUT               |
| 69     | 421-5030 | HANDLE LOCK PLATE        |
| 70     | 120-2020 | SCREW(I)                 |
| 71     | 424-0030 | SPOOL ASSEMBLY           |
| 72     | 297-0010 | BALL BEARING(C)          |
| 73     | 012-0010 | PIN(B)                   |
| 74     | 422-0030 | LEFT SIDE PLATE(A)       |
| 75     | 422-1010 | COVER(A)                 |
| 76     | 422-4010 | BRAKE DIAL               |
| 77     | 200-2010 | BRAKE CLICK SPRING       |
| 78     | 358-4010 | CAM(A)                   |
| 79     | 457-9010 | WASHER(D)                |
| 80     | 457-8010 | PIN(C)                   |
| 81     | 422-2010 | COVER(B)                 |
| 82     | 429-9010 | MAGNET HOLDER ASSEMBLY   |
| 83     | 266-5010 | SPRING(B)                |
| 84     | 358-3010 | CAM(B)                   |
| 85     | 052-6020 | SCREW(J)                 |
| 86     | 422-3010 | LEVER                    |
| 87     | 014-1010 | SCREW(K)                 |
| 88     | 185-0010 | SPACER(F)                |
| 89     | 297-1010 | BALL BEARING(D)          |
| 90     | 297-6010 | BEARING RETAINER         |

### CC80HS SPECIAL PARTS

| Key No | Part No  | Description |
|--------|----------|-------------|
| 38     | 361-6010 | PINION GEAR |
| 42     | 286-8010 | DRIVE GEAR  |
| 60     | 420-9010 | STAR DRAG   |